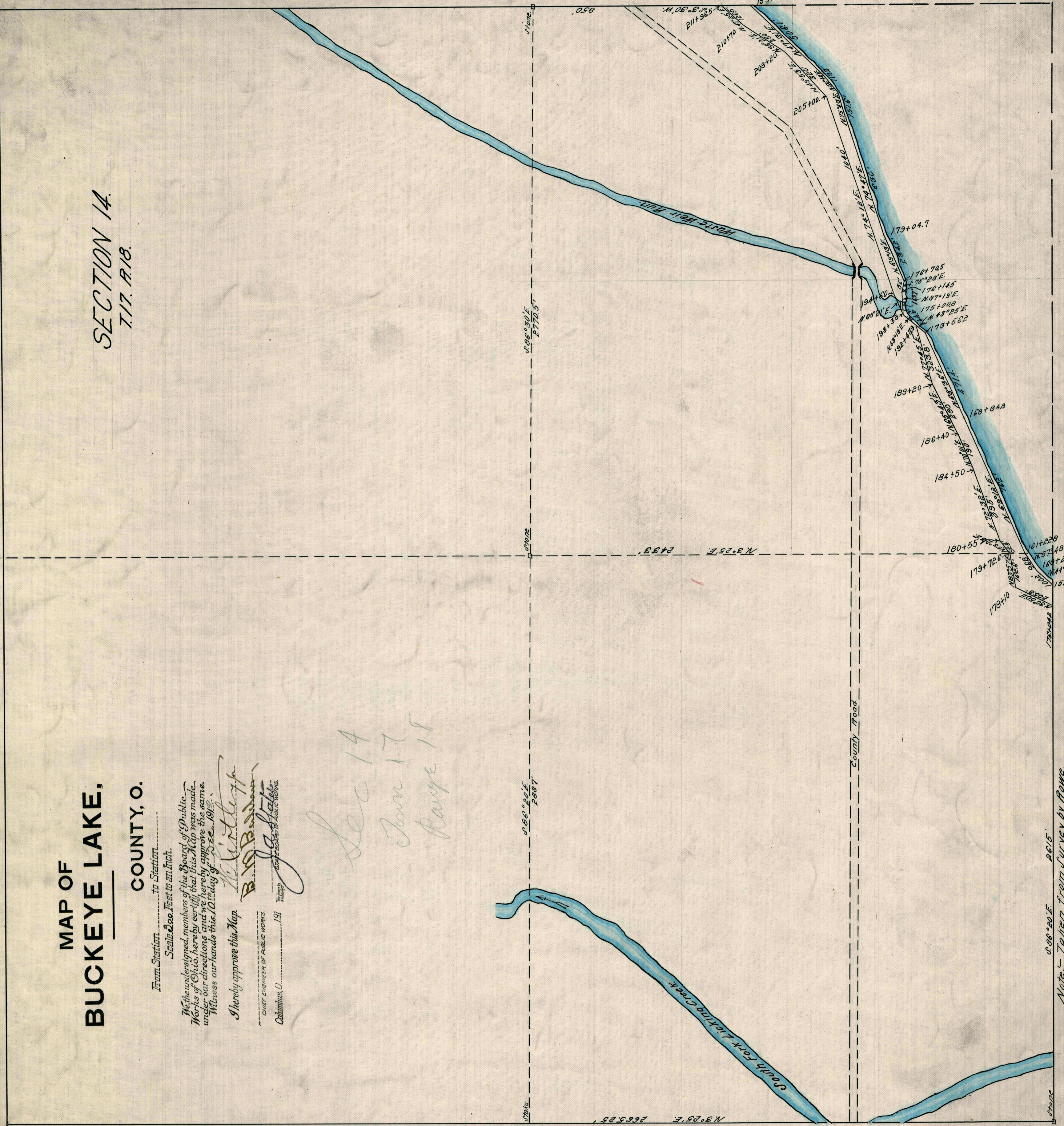


MAP OF
BUCKEYE LAKE,
COUNTY, O.

SECTION 14.
T. 17. R. 18.

From Station to Station
Scale 2000 Feet to an Inch.
The undersigned members of the Board of Public Works of Columbus, Ohio, have examined the above map and find it to be correct in all particulars and we hereby approve the same.
Witness our hands this 17th day of June, 1891.
I hereby approve this Map.
B. W. B. [Signature]
COUNTY CLERK OF PUBLIC WORKS
Columbus, O. [Signature]

Sec 14
June 17
Range 18



Note: Taken from Survey by Rome.