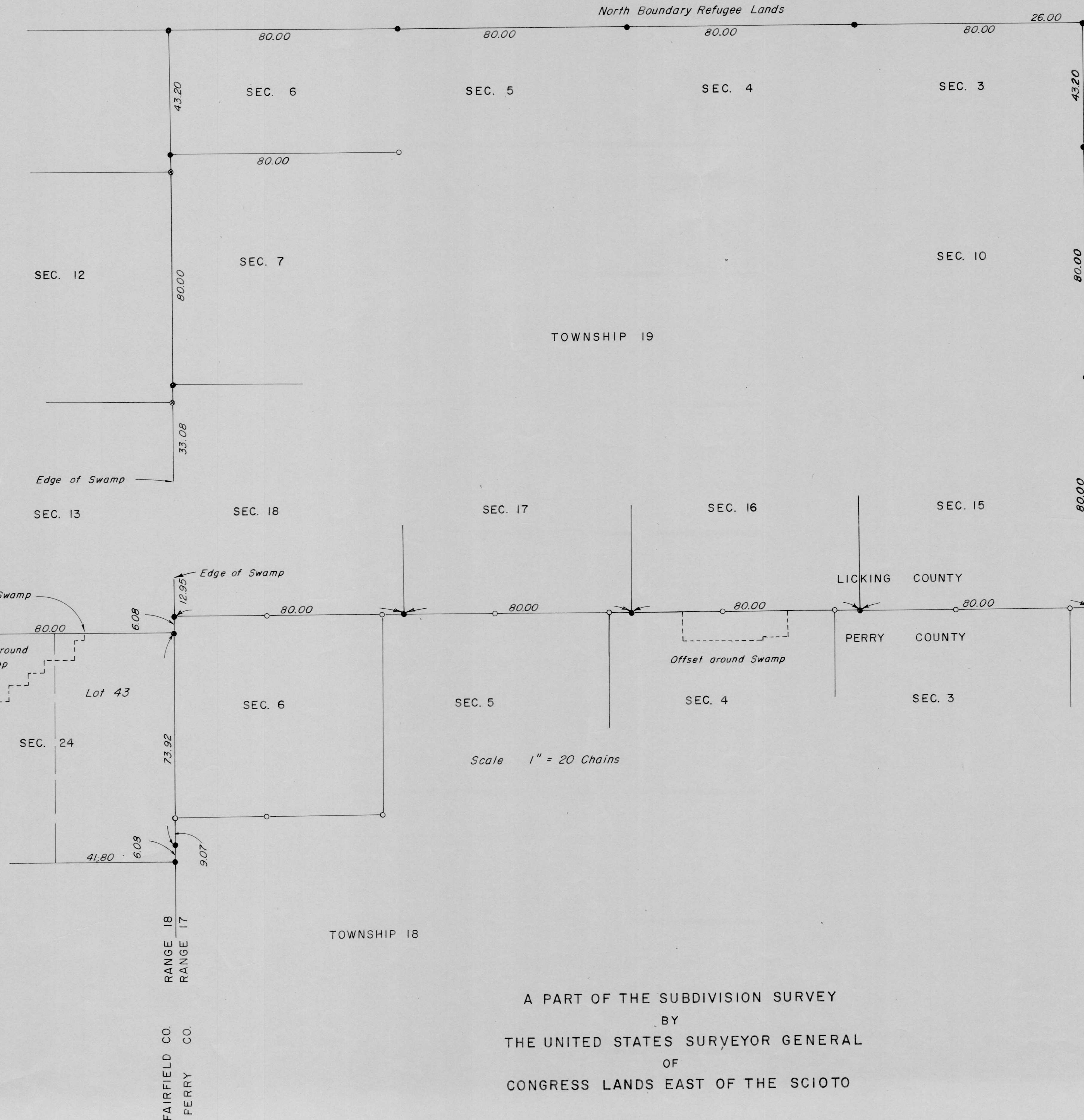
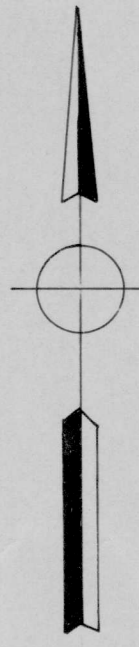


*Elnathan Scofield subdivided the sections in Township 17, Range 18 and the sections in Township 19, Range 17 into half sections for Refugee lots in 1801.*

UNITED STATES MILITARY DISTRICT



*John Mathews began at the southwest corner of Section 18 and traversed to the southeast corner of Section 15, to the northeast corner of Section 3, to the northwest corner of Section 6, and through the northwest corner of Section 18 to the edge of the swamp in 1798.*

*This drawing has been prepared from records on file in The State of Ohio Auditor's Office.*

*Field Notes:  
Congress Lands East of The Scioto  
Vol. 4 Pages 82 through 119  
Vol. 5 Pages 1 through 12*

*Refugee Lot Survey by Scofield  
Township 17 Range 18  
Township 19 Range 17*

*John Mathews and Ebenezer Buckingham ran the north lines of Section 23 and 24 in 1798. The lines were through a swamp and could not be occupied. The corner posts were set using offset line.*

*\* Post by Mathews and Buckingham*

Scale 1" = 20 Chains

A PART OF THE SUBDIVISION SURVEY  
BY  
THE UNITED STATES SURVEYOR GENERAL  
OF  
CONGRESS LANDS EAST OF THE SCIOTO

STATE OF OHIO OFFICE OF LAKE LANDS ADMINISTRATOR	
BUCKEYE STATE LAKE LICKING COUNTY BOUNDARY RESOLUTION	
SIMPSON AND MASTRIANI CONSULTING ENGINEERS COLUMBUS, OHIO 43214	SCALE: GRAPHIC DATE : SHEET OF